

Project Name: **SCEAM - Soil Condition Evaluation & Monitoring Project, Tasmania**
 Project Code: **SCEAM** Site ID: **S72** Observation ID: **1**
 Agency Name: **TAS Department of Primary Industries and Water**

Site Information

Desc. By: G. Scholtz
 Date Desc.: 08/05/07
 Map Ref.: Sheet No. : SK55-8 1:250000
 Northing/Long.:
 Easting/Lat.:
 Locality: Weld Valley
 Elevation: 200 metres
 Rainfall: 1500
 Runoff: Rapid
 Drainage: Well drained

Geology

ExposureType: Soil pit
 Geol. Ref.: Jurassic Dolerite
 Conf. Sub. is Parent. Mat.: Certain
 Substrate Material: Dolerite

Land Form

Rel/Slope Class: Rolling hills 90-300m 10-32%
 Morph. Type: Mid-slope
 Elem. Type: Hillslope
 Slope: 15 %
 Pattern Type: Mountains
 Relief: 300 metres
 Slope Category: Steep
 Aspect: 180 degrees

Surface Soil Condition (dry): Loose

Erosion: Partial, Minor (sheet) Partial, Present (mass)

Soil Classification

Australian Soil Classification:

Haplic Dystrophic Red Dermosol Medium Slightly gravelly
 Clay-loamy Clayey Very deep

ASC Confidence:

Analytical data are incomplete but reasonable confidence.

Site Disturbance: No effective disturbance. Natural

Vegetation: Tall Strata - Cycad, 20.01-35m, Closed or dense. *Species includes - Eucalyptus obliqua

Surface Coarse Fragments: 10-20%, cobbly, 60-200mm, rounded, Dolerite

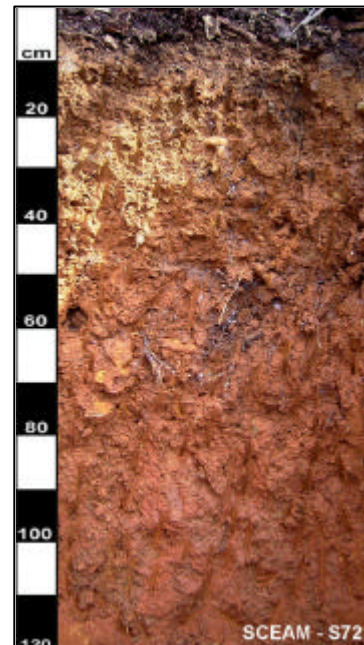
Profile Morphology

O1 0 - 5 m Organic Layer; Very dark brown (10YR2/2-Moist); Very dark grey (10YR3/1-Dry); Loam (Fibric); Many (>5 per 0.01m2) Coarse (>5mm) macropores, Dry; Loose consistence; Non-plastic; Non-sticky; 2-10%, coarse gravelly, 20-60mm, rounded, dispersed, Dolerite, coarse fragments; 2-10%, coarse gravelly, 20-60mm, rounded, dispersed, Dolerite, coarse fragments; 2-10%, cobbly, 60-200mm, rounded, dispersed, Dolerite, coarse fragments; Abundant, very fine (0-1mm) roots; Abundant, fine (1-2mm) roots; Abundant, medium (2-5mm) roots; Abundant, coarse (>5mm) roots; Clear, Wavy change to -

B1 5 - 15 m Strong brown (7.5YR4/6-Moist); Strong brown (7.5YR5/8-Dry); Clay loam; Moderate grade of structure, 10-20 mm, Angular blocky; Rough-ped fabric; Coarse, (10 - 20) mm crack; Common (1-5 per 100mm2) Medium (2-5mm) macropores, Many (>5 per 100mm2) Coarse (>5mm) macropores, Dry; Weak consistence; Slightly plastic; Normal plasticity; Slightly sticky; 2-10%, coarse gravelly, 20-60mm, rounded, dispersed, Dolerite, coarse fragments; 2-10%, cobbly, 60-200mm, rounded, dispersed, Dolerite, coarse fragments; 2-10%, stony, 200-600mm, rounded, dispersed, Dolerite, coarse fragments; Abundant, very fine (0-1mm) roots; Abundant, fine (1-2mm) roots; Abundant, medium (2-5mm) roots; Abundant, coarse (>5mm) roots; Gradual, Wavy change to -

B21 15 - 60 m Yellowish red (5YR4/6-Moist); Yellowish red (5YR5/8-Dry); Medium clay; Strong grade of structure, 20-50 mm, Angular blocky; Rough-ped fabric; Coarse, (10 - 20) mm crack; Very coarse, (20 - 50) mm crack; Common (1-5 per 100mm2) Medium (2-5mm) macropores, Common (1-5 per 0.01m2) Coarse (>5mm) macropores, Dry; Weak consistence; Moderately plastic; Normal plasticity; Moderately sticky; Gradual, Wavy change to -

B22 60 - 80 m Red (2.5YR4/6-Moist); Yellowish red (5YR5/8-Dry); Medium clay; Strong grade of structure, 10-20 mm, Angular blocky; Weak grade of structure, 5-10 mm, Angular blocky; Smooth-ped fabric; Rough-ped fabric; Coarse, (10 - 20) mm crack; Coarse, (10 - 20) mm crack; Common (1-5 per 0.01m2) Medium (2-5mm) macropores, Many (>5 per 0.01m2) Coarse (>5mm) macropores, Moderately moist; Firm consistence; Very plastic; Normal plasticity; Very sticky; 2-10%, coarse gravelly, 20-60mm, rounded, dispersed, Dolerite, coarse fragments; 2-10%, cobbly, 60-200mm, rounded, dispersed, Dolerite, coarse fragments; 2-10%, stony, 200-600mm, rounded, dispersed, Dolerite, coarse fragments; Abundant, very fine (0-1mm) roots; Abundant, fine (1-2mm) roots; Abundant, medium (2-5mm) roots;



Chemistry Data

			Organic C%	pH (H2O)	pH (CaCl2)	EC (dS/m)	Exchangeable Bases (meq/100g)				ECEC (meq/100g)	ESP %	Olsen P (mg/kg)	Total N %	Colwell_K (mg/kg)
							Ca	Mg	Na	K					
0	to	75 mm	5.64	5.5	4.9	0.17	12.26	3.09	0.31	1.02	16.93	1.83	16.60	0.35	412
150	to	225 mm	2.31	5.5	4.7	0.06	2.99	1.41	0.19	0.69	5.68	3.35	16.50	0.14	254
250	to	500 mm	1.29	5.1	4.3	0.02	1.80	1.16	0.10	0.15	4.52	2.21	4.30	0.09	64
600	to	800 mm	1.35	5.2	4.3	0.03	2.01	1.75	0.13	0.26	5.17	2.51	4.00	0.09	89
900	to	1200 mm	1.06	5.5	4.6	0.02	1.93	2.29	0.15	0.30	4.88	3.07	4.40	0.08	113